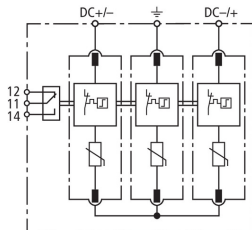


DG M YPV 1500 FM (952 567)

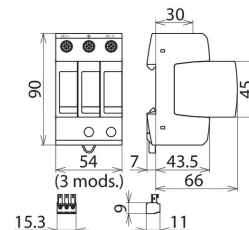
- High discharge capacity due to powerful zinc oxide varistors
- Modular prewired complete unit for use in photovoltaic systems consisting of a base part and plug-in protection modules
- High reliability due to "Thermo Dynamic Control" SPD monitoring device



Figure without obligation



Basic circuit diagram DG M YPV 1500 FM



Dimension drawing DG M YPV 1500 FM

Multipole modular surge arrester for use in PV systems; with remote signalling contact for monitoring unit (floating changeover contact).

Type	DG M YPV 1500 FM
Part No.	952 567 NEW
SPD according to EN 50539-11	type 2
Max. PV voltage (U_{CPV})	1500 V
Short-circuit current rating (I_{SCPV})	10 kA
Total discharge current (8/20 μ s) (I_{total})	40 kA
Nominal discharge current (8/20 μ s) [(DC+/DC-) --> PE] (I_n)	15 kA
Max. discharge current (8/20 μ s) [(DC+/DC-) --> PE] (I_{max})	40 kA
Voltage protection level (U_P)	≤ 5 kV
Response time (t_A)	≤ 25 ns
Operating temperature range (T_U)	-40 °C ... +80 °C
Operating state / fault indication	green / red
Number of ports	1
Cross-sectional area (min.)	1.5 mm ² solid / flexible
Cross-sectional area (max.)	35 mm ² stranded / 25 mm ² flexible
For mounting on	35 mm DIN rails acc. to EN 60715
Enclosure material	thermoplastic, red, UL 94 V-0
Place of installation	indoor installation
Degree of protection	IP 20
Capacity	3 module(s), DIN 43880
Approvals	UL, KEMA
Type of remote signalling contact	changeover contact
Switching capacity (a.c.)	250 V / 0.5 A
Switching capacity (d.c.)	250 V / 0.1 A; 125 V / 0.2 A; 75 V / 0.5 A
Cross-sectional area for remote signalling terminals	max. 1.5 mm ² solid / flexible
Weight	329 g
Customs tariff number (Comb. Nomenclature EU)	85363030
GTIN	4013364327726
PU	1 pc(s)

We reserve the right to introduce changes in performance, configuration and technology, dimensions, weights and materials in the course of technical progress. The figures are shown without obligation.